

CLASSIC TOWER

4K

4K

NIR FI CCU



CLASSIC TOWER

4K



Laparoscopes 10x344mm, NIR 0° (11-0131nir) and 30° (11-0143nir)

- Notch Filter at 805 nm
- AR coating for optimal NIR transmission
- Class 1M laser* output at distal end
- *Safe for all conditions of use except when passed through magnifying optics



NIR FI Camera Head ZOOM (95-3908)

- Sensitive in the visible and near-infrared spectrum to intraoperatively detect NIR fluorescence with indocyanine green
- Powerful sensor with improved NIR sensitivity
- Switch to NIR FI imaging modes by single press of a button¹
- Suitable for white light imaging without any limitations



NIR FI Light Guide 4,8mm x 3,000mm (05-00941-nir)

- Specified equipment for NIR laser activation
- Class 3R laser² output at distal end



NIR FI 4K UHD CCU (95-3985)

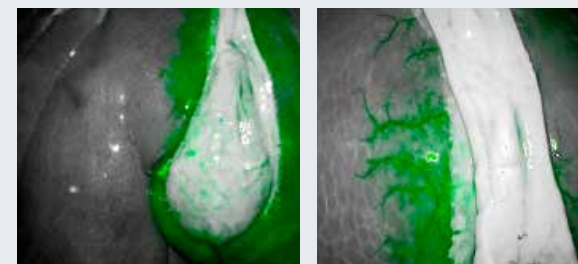
- Our 4K system can perform NIR procedures
- Auto control of NIR FI Light Source
- NIR FI – displayed in 3 NIR fluorescence signal image modes
- Picture out of picture mode (PoP) to display 2 modes next to each other



NIR FI Light Source (05-0761nir)

- 805 nm NIR laser for optimal ICG excitation
- Fully automatic light control by NIR,
- FlexiVision cameras through MIS-Bus interface
- Independent switch between auto/manual for VIS light in NIR or VIS mode

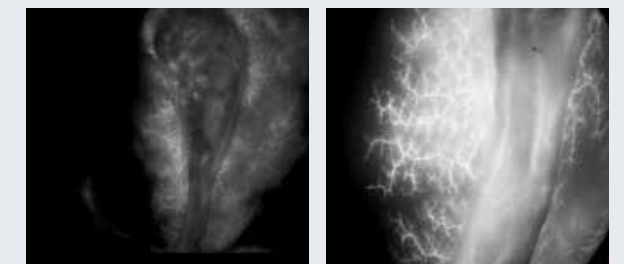
¹ as before individually programmable and illuminated function buttons
² safe if handled carefully, but with risk of eye injury



FEATURES OF NIR FI GREEN

White light image is displayed in grayscale with NIR fluorescence indicated and overlaid in green.

- High-contrast visualization of targeted tissue structures with intensive green colored fluorescence
- Grayscaled bottom image allows focused view of the fluorescent structures
- Optimal for delineation of tissue structures for perfusion assessment and biliary duct visualization



FEATURES OF NIR FI CONTRAST

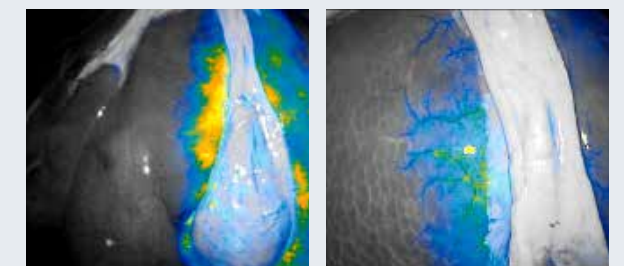
NIR fluorescence indicated by the color white and all other areas of the image appear dark.

- Highest-contrast visualization of NIR fluorescence shown on a black background
- Pure NIR fluorescence signal provides the clearest demarcation possible (anatomic background not visible)
- Freedom of light reflection
- Optimal for demarcation of perfusion assessment and biliary duct visualization

FEATURES OF NIR FI INTENSITY

White light image is displayed in grayscale with NIR fluorescence indicated and overlaid with a multi-color intensity scale.

- Relative intensity of the NIR signal is displayed by using a multi-color scale
- High-contrast visualization of signal gradients between weak and strong NIR signals
- Powerful tool for delineation of (sentinel) lymph nodes against surrounding fluorescence signal



CLASSIC TOWER

4K

endoVIMS



DÉSIGNATION	RÉFÉRENCE
CONFIGURATION NIR FL	
Laparoscope 10x344mm, NIR, 0°	11-0131nir
Laparoscope 10x344mm, NIR, 30°	11-0143nir
NIR FI Camera Head ZOOM	95-3908
NIR FI 4K UHD CCU	95-3985
NIR FI Light Guide 4,8mm x 3,000mm	05-0094I-nir
NIR FI Light Source	05-0761nir
4K UHD 32" IPS screen	PVM594
Medical Vcart	CTH04



VIMS

10 AVENUE DE FONTRÉAL - EUROCENTRE
31620 VILLENEUVE LES BOULOC - FRANCE
TÉL. +33 5 34 45 09 09 - FAX. +33 5 61 22 85 84
VIMS-SYSTEM.COM

Classic Tower 4K Endo NIR FI CCU 4K - Brochure EN - réf. XXX
Manufacturer : VIMS - Screen/VCART CE Class I
Manufacturer : SCHÖLLY - laparoscope CE 0297 Class I - light cable CE Class I
processor & camera CE Class IIa - light source CE 0297 Class IIa
It is highly recommended to read the labels and the IFU.

Copyright © 2018 VIMS SA.
Vims devices are protected by international patents.

A  ZIMMER BIOMET company