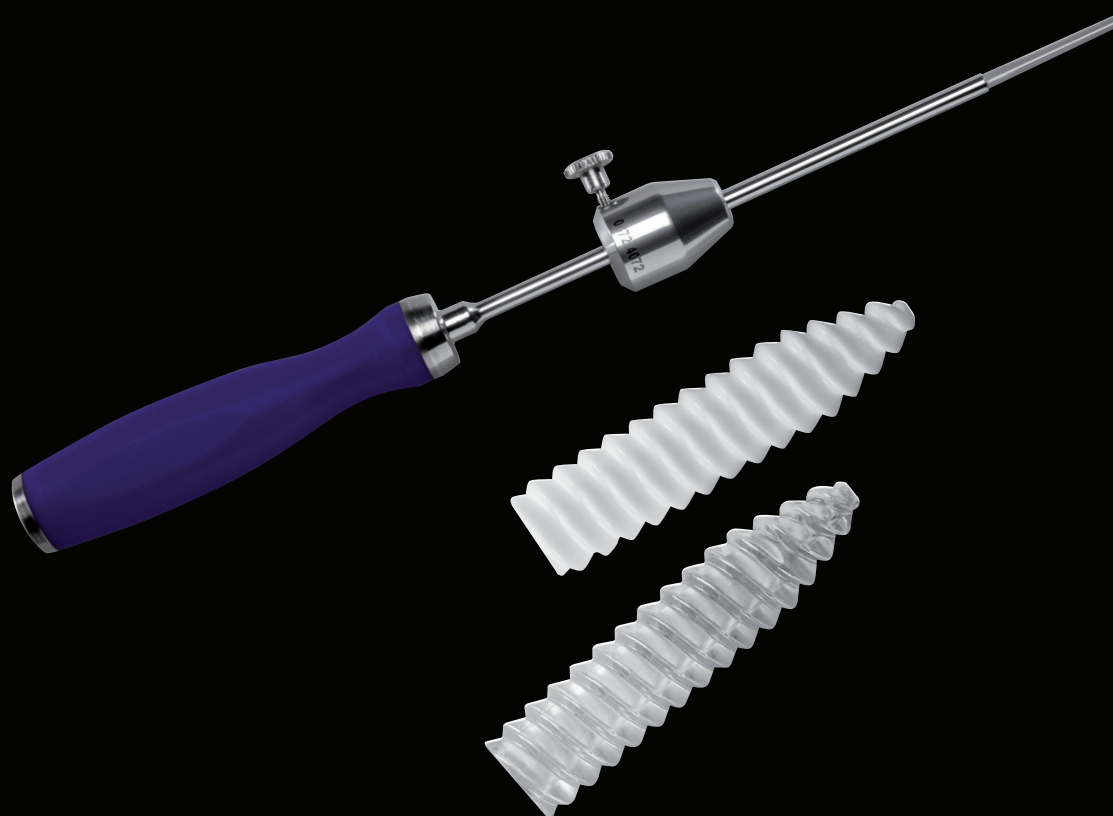


ARTHRO **V** TWIST[®]



BIOABSORBABLE INTERFERENCE SCREW

Ligament surgery

ARTHROTWIST is a bioresorbable cannulated screw specially designed for ligamentoplasty surgical techniques like anterior/posterior cruciate ligament reconstructions, reinsertion of the long-head of the biceps tendon or ankle ligaments.

ARTHROTWIST offers a complete range of screws and tools that ensure a secure fixation of the transplants.

ARTHROTWIST is suitable for current ligamentoplasty techniques (bone-tendon-bone or soft tissues grafts in femoral or tibial tunnels).



KNEE



ANKLE



SHOULDER



ARTHROTWIST PLA

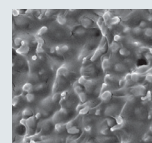
Screw 100% PLA poly(70/30 ; L/DL) Lactide

PLA is a well-known polymer, which breaks down through hydrolytic deterioration **ARTHROTWIST** PLA is radiotransparent.



ARTHROTWIST TCP

Screw 70%PLA / 30% β -TCP

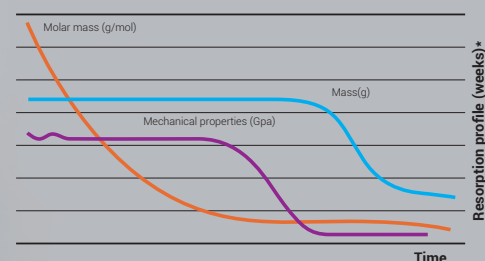


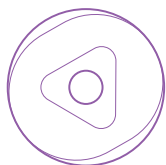
β -TCP particles are sub-micron sized. The mixing of these two materials is performed by a chemical reaction which results in a homogeneous combination. Distribution into the PLA matrix is homogeneous and free of agglomerates allowing a better bone integration. TCP into the PLA matrix keeps a neutral pH of the material by buffer effect during the degradation time and reduces risk of inflammation.

β -TCP is also an osteoconductive material which promotes bone ingrowth.

RESORPTION

ARTHROTWIST screws are stable 6 months post-operative, that ensures a proper healing. Then they are slowly hydrolyzed by water from surrounding tissues and fully replaced by neoformed bone after **24 months**.





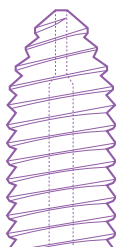
HIGH TORQUE RESISTANCE

ARTHROTWIST was designed to reduce the risk of breakage. The screws have a triangular inner cone with rounded angles. The transmission of the torque is performed by compression and not in shearing mode. This increases the torque failure resistance of **ARTHROTWIST** range in comparison with others absorbable screws.



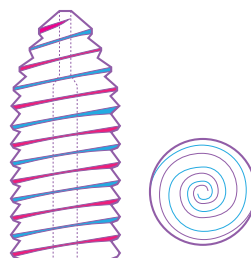
SELF-TAPPING

ARTHROTWIST has a sharp tip combined to a double thread for a faster and efficient insertion.



SPECIAL INTERNAL CONFIGURATION

Internal design of the tip avoids any contact between the screwdriver and soft tissues.



DOUBLE THREAD – FAST SCREWING

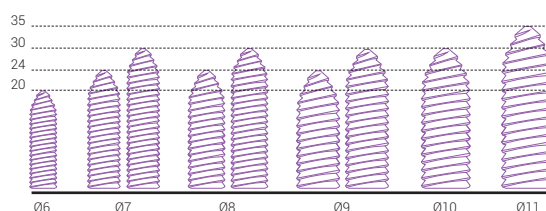
ARTHROTWIST has a double thread that reduces the number of turns to introduce the screw in comparison with single thread design.

FLAT HEAD

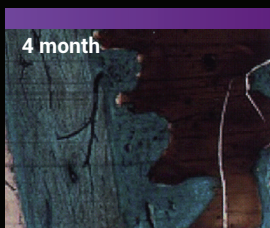
A flat head prevents tissue's friction at the bone surface after implantation. The screw can be inserted with accuracy ; this is particularly suitable for tibial tunnel.

FULL RANGE

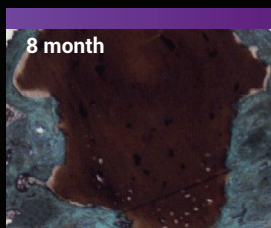
The interference screws **ARTHROTWIST** are available in 9 references, including 6 diameters and 4 lengths suitable for current ligamentoplasty techniques.



ARTHROTWIST TCP IN VIVO IMPLANTATION*



Cohesion of new bone ingrowth all around the screw



Screw distortion during process of resorption



Interdigitation of new bone into screw's fragments

Implant

Neoformed bone



STORAGE

ARTHROTWIST must be stored in its original unopened packaging in a clean and dry place at ambient temperature (maximum 37°C).

For any further information, please refer to the IFU.

PRODUCTS

ARTHROTWIST are delivered double packed in an aluminium pouch and sterilized by ethylene oxide. They are ready to use. **Single Use. Do not re-sterilize.**

Instrumentation set is available for ligamentoplasty procedure. Please contact us for more information.

ARTHROTWIST PLA	Reference	ARTHROTWIST TCP	Reference
Ø 6 mm – L 20 mm	10001399-PLA1	Ø 6 mm – L 20 mm	10001399-PLATCP1
Ø 7 mm – L 24 mm	10001399-PLA2	Ø 7 mm – L 24 mm	10001399-PLATCP2
Ø 7 mm – L 30 mm	10001399-PLA3	Ø 7 mm – L 30 mm	10001399-PLATCP3
Ø 8 mm – L 24 mm	10001399-PLA4	Ø 8 mm – L 24 mm	10001399-PLATCP4
Ø 8 mm – L 30 mm	10001399-PLA5	Ø 8 mm – L 30 mm	10001399-PLATCP5
Ø 9 mm – L 24 mm	10001399-PLA6	Ø 9 mm – L 24 mm	10001399-PLATCP6
Ø 9 mm – L 30 mm	10001399-PLA7	Ø 9 mm – L 30 mm	10001399-PLATCP7
Ø 10 mm – L 30 mm	10001399-PLA8	Ø 10 mm – L 30 mm	10001399-PLATCP8
Ø 11 mm – L 35 mm	10001399-PLA9	Ø 11 mm – L 35 mm	10001399-PLATCP9

INSTRUMENTATION

ARTHROTWIST® BIOABSORBABLE SCREW must be used with the specific screwdriver provided by VIMS.
Reference : T067231



*Data provided by the manufacturer

Document design date : June 2021 - Range : Absorbable interference screw
Manufacturer : TEKNIMED - Brand Name : ARTHROTWIST - Medical Device Class : III
CE Mark N° : 2797 BSI - Brand Name : Screwdriver - Class I - User : Health professional
- Indications : Ligamentoplasty procedures, biceps tenodesis - Recommendations for use: it is highly recommended to read the labels and the IFU.
BR_ARTHROTWIST_EN_V02



VIMS SA
10 AVENUE DE FONTRÉAL - EUROCENTRE
31620 VILLENEUVE LES BOULOC - FRANCE
TÉL. +33 5 34 45 09 09 - FAX. +33 5 61 22 85 84

VIMS-SYSTEM.COM

A ZIMMER BIOMET company