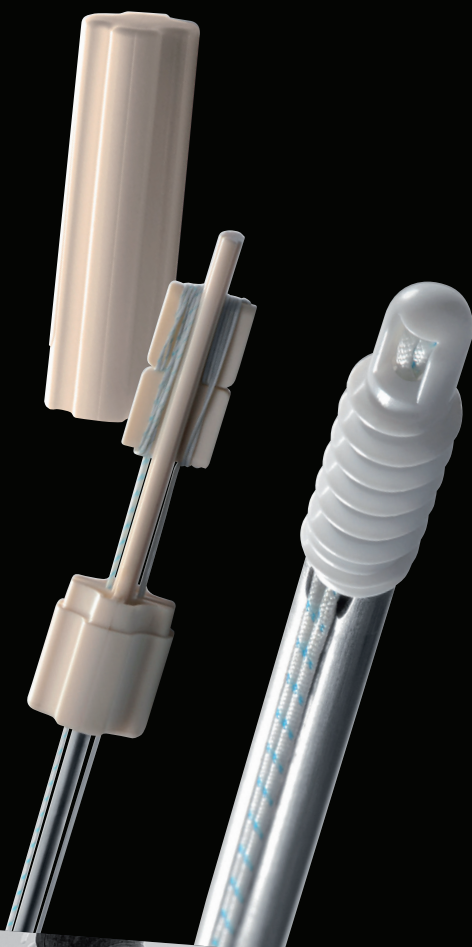


ARTHROVFIX™



BIOABSORBABLE SUTURE ANCHORS

It is specially designed for rotator cuff repair and biceps tenodesis.

ARTHROFIX is a bioabsorbable suture anchor mounted on a single-use screwdriver assembled with two sutures composed of UHMWPE (USP2).

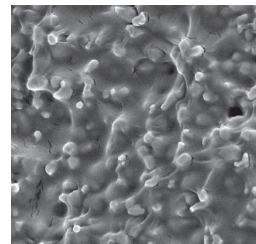


COMPOSITION

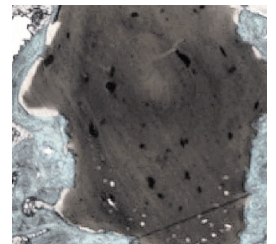
Bioabsorbable biocomposite polymer:
70% **PLA** (Polylactic Acid)
30% of **β-TCP** (tricalcium phosphate).

β-TCP particles are sub-micron sized and homogeneously distributed within the PLA matrix, in addition, they are agglomerates free for a better bone integration.

TCP keeps a neutral PH by buffer effect, the resorption speed is thus increased without risk of inflammation.



PLA / β-TCP composite
(x10 000 MET)*



Distortion of the thread
during resorption *

■ Bone growth ■ Implant

INSERTION



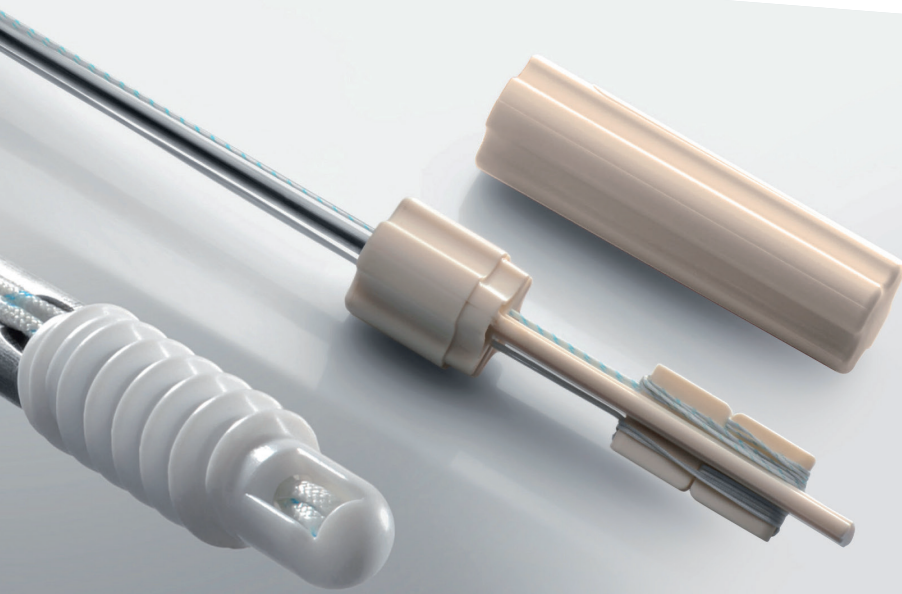
Threading*



Easy implantation*

ADVANTAGES

BIOCOMPOSITE
 HOMOGENEOUS PLA/TCP POLYMER
 BIOCOMPATIBLE
 DOUBLE THREAD
 RESORPTION SPEED CONTROLLED
 HIGH MECHANICAL PROPERTIES



PROPERTIES

Its **double thread** allows an increase of the pull out strength of the anchor.

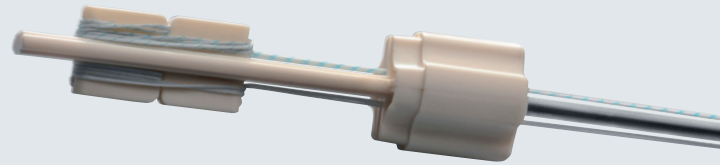
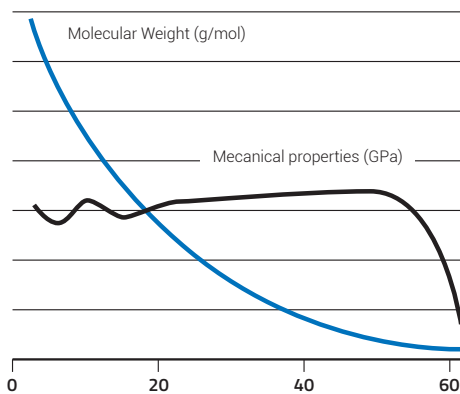
High mechanical properties improved by the **homogeneous distribution of the TCP particles** within the PLA matrix.

Biocompatible

Controlled resorption speed thanks to PLA material which degrades through hydrolysis and TCP particules which increase resorption speed.

Mechanical properties are maintained for 6 months and the anchor is no longer detectable after **24 months**.

RESORPTION* (weeks)



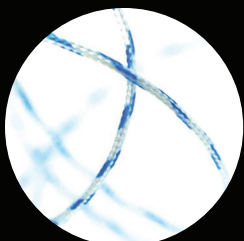
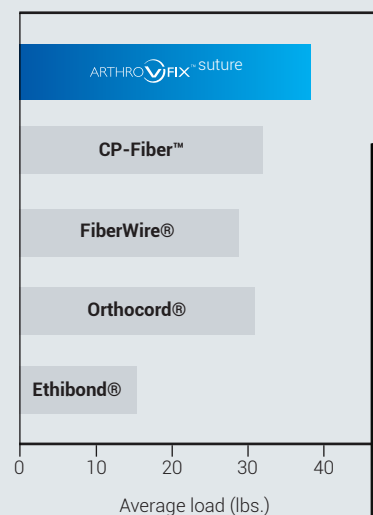
SUTURE

The USP2 sutures are made of UHMWPE (Ultra High Molecular Weight Poly Ethylene)
Each suture is maintained in a dedicated handle which prevents them from becoming tangled.

PROPERTIES

- High tensile strength
- Suture material and braiding make sliding smoother, but once in position knots are strongly tightened.
- The sutures allow tighter loop security during the tying process and superior knot break strength than competitors.

Knot Tensile*



SUTURE ADVANTAGES

HIGH TENSILE STRENGTH
SMOOTH KNOT SLIDING
SOLIDITY AND SECURITY OF THE SUTURES



STORAGE

ARTHROFIX™ must be stored in its original unopened packaging, in a clean and dry place, at ambient temperature (maximum 37°C).

PRODUCTS & INSTRUMENTATION

ARTHROFIX™ anchors are packaged in a blister itself sealed in an aluminum pouch and sterilized by ethylene oxide. Single use. Do not re-sterilize.

Instrumentation for arthroscopic and mini-open procedures is available.
For any further information, please refer to the IFU and/or contact us.

ANCHORS	Size	Reference
ARTHROFIX Ø 5.5 ANCHOR	5,5	10001398-1
ARTHROFIX Ø 6.5 ANCHOR	6,5	10001398-2

INSTRUMENTATION

ARTHROFIX™ anchors must be used with specific instruments provided by VIMS



Punch Tap

CE 2797
CLASSE III / ARTHROFIX

CE
CLASSE I NOT STERILE / INSTRUMENTATION

*Datas provided by the manufacturer

Document design date : January 2021 - Range : Bioabsorbable suture anchor -
Manufacturer : TEKNIMED - Brand Name : ARTHROFIX - Medical Device Class:III
CE Mark N°: 2797 - Brand Name : Pointeau taraud ARTHROFIX - Medical Device
Class : I non stérile - User : Health professional Indications : Rotator cuff repair
and biceps tenodesis - Recommendations for use: it is highly recommended
to read the labels and the IFU
BR_ARTHROFIX_EN_V01.



VIMS SA
10 AVENUE DE FONTRÉAL - EUROCENTRE
31620 VILLENEUVE LES BOULOC - FRANCE
TÉL. +33 5 34 45 09 09 - FAX. +33 5 61 22 85 84

VIMS-SYSTEM.COM

A  ZIMMER BIOMET company