



BIOABSORBABLE SUTURE ANCHOR

BIOABSORBABLE

BR

ARTHROVIMS[®] BR



 **SPORT
MEDICINE**
ADVANCED TECHNOLOGY

BIORESORBABLE SUTURE ANCHOR

Indicated for rotator cuff repair.



ARTHROVIMS BR is a bioabsorbable screw anchor associated with two UHMWPE (USP2) sutures or a suture and a tape mounted on a single-use screwdriver.

ARTHROVIMS BR KNOTLESS is also a knotless bioabsorbable screw anchor, designed to be used in combination with sutures and sutures and tapes.

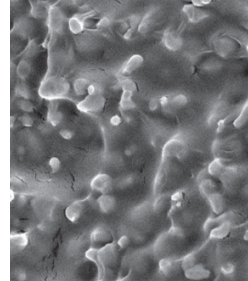
- Biocomposite
- Homogeneous pla/tcp polymer
- Biocompatible
- Double thread
- Resorption speed controlled
- High mechanical properties

COMPOSITION

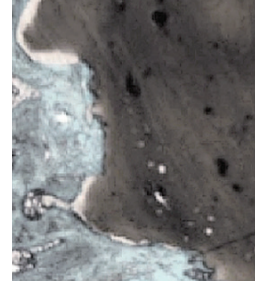
Bioabsorbable biocomposite polymer:
70% **PLA** (Polylactic Acid)
30% of **β-TCP** (tricalcium phosphate).

β-TCP particles are sub-micron sized and homogenously distributed within the PLA matrix, in addition, they are agglomerates free for a better bone integration.

TCP keeps a neutral PH by buffer effect, the resorption speed is thus increased without risk of inflammation.



PLA / β-T CP composite
(x10 000 MET)



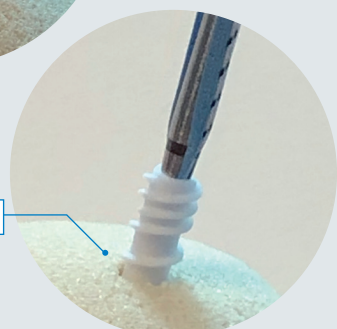
Distortion of the thread
during resorption

■ Bone growth ■ Implant

INSTRUMENTATION



THREADING



EASY IMPLANTATION

PROPERTIES

Its **double thread** allows an increase of the pull out strength of the anchor.

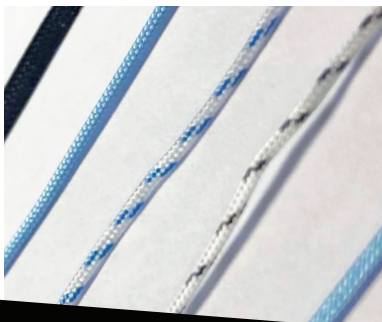
High mechanical properties improved by the **homogeneous distribution of the TCP particles** within the PLA matrix.

Biocompatible

Controlled resorption speed thanks to PLA material which degrades through hydrolysis and TCP particules which increase resorption speed.

Mechanical properties are maintained for 6 months and the anchor is no longer detectable after **24 months**.

Adaptation to multiple surgical techniques



SUTURES & TAPES

USP2 sutures and 1.4 mm tape sutures are made of ultra high molecular weight polyethylene (UHM-WPE).

Two different compositions:

- 2 USP2 sutures
- 1 USP2 suture and 1 1.4mm tape

PROPERTIES

- High tensile strength
- Knots slide easily due to the composition of the sutures and tapes, but once in place they are blocked



SUTURES ADVANTAGES

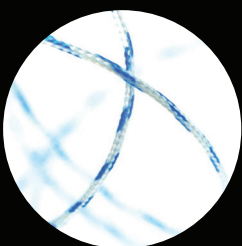
ARTHROVIMS BR anchors are associated with 2 USP2 sutures or 1 suture and 1 1.4 mm tape (made of ultra-high molecular weight polyethylene UHMWPE)

HIGH TENSILE STRENGTH

SMOOTH KNOT SLIDING

THREADS CANNOT BECOME ENTANGLED

SOLIDITY AND SECURITY OF THE SUTURES



STORAGE

ARTHROVIMS® BR must be stored in its original unopened packaging, in a clean and dry place, at temperature below 32°C.

PRODUCTS & INSTRUMENTATION

ARTHROVIMS® BR anchor is packaged in a blister itself sealed in an aluminum pouch and sterilized by ethylene oxide.

Single use. Do not re-sterilize.

Instrumentation for arthroscopic procedures is available.

ARTHROVIMS® BR must be used with the corresponding tap supplied by VIMS.

For any further information, please refer to the IFU

DESIGNATION	SIZE	REFERENCES
ROTATOR CUFF		
ARTHROVIMS BR 2 sutures Blue/White - Black	4,5mm	VIMS-10075
ARTHROVIMS BR 1 suture White/Blue - 1 tape Black	4,5mm	VIMS-10076
ARTHROVIMS BR 1 suture White/Black - 1 tape Blue	4,5mm	VIMS-10077
ARTHROVIMS BR 2 sutures Blue/White - Black	5,5mm	VIMS-10078
ARTHROVIMS BR 1 suture White/Blue - 1 tape Black	5,5mm	VIMS-10079
ARTHROVIMS BR 1 suture White/Black - 1 tape Blue	5,5mm	VIMS-10080
ARTHROVIMS BR KNOTLESS	5,5mm	VIMS-10159
ARTHROVIMS BR KNOTLESS	4,75mm	VIMS-10160

CE 2265
CLASSE III / ARTHROVIMS BR

CE
CLASSE I NOT STERILE / INSTRUMENTATION



VIMS SA
10 AVENUE DE FONTRÉAL - EUROCENTRE
31620 VILLENEUVE LES BOULOC - FRANCE
TÉL. +33 5 34 45 09 09 - FAX. +33 5 61 22 85 84

VIMS-SYSTEM.COM