



ARTHROVIMS®

ARTHROSCOPY DUAL FLOW PUMP





VIMS offers a **complete range** of equipment for arthroscopic surgery: dual flow **pump, shaver,** and plasma **radiofrequency.**

ARTHROSCOPY DUAL FLOW PUMP

The Aqua Vision dual flow pump of the VIMS range enables fluid management during arthroscopic surgical procedures.

This pump and its accessories have been developed to provide surgical comfort by combining simplicity and polyvalence:

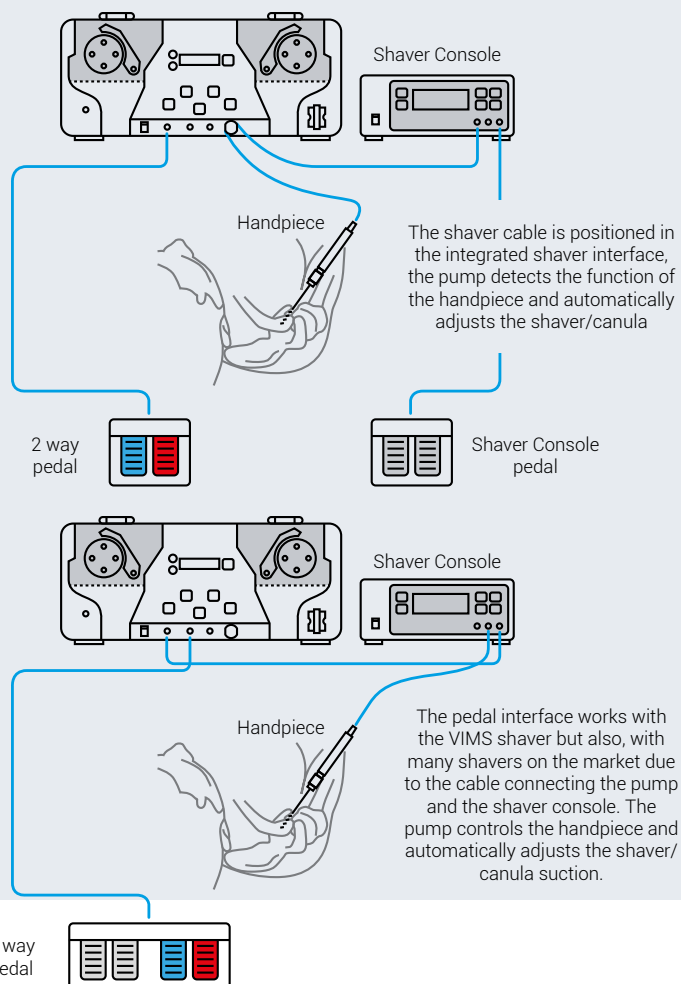
- Automatic management of the irrigation depending on the suction: exact control of the pressure
- Intra-articular pressure automatically controlled independent of the outflow
- Possibility of adapting the pressure and suction to the to the joint
- Optimized reactivity for more comfort in use
- Pressure measurement in mmHg (from 20 to 280 mm Hg) or in LH2O (from 10 to 120 LH2O) as desired
- Integrated shaver interface adapted to the shaver of the VIMS range as well as to other shavers on the market
- Pedal interface:
2-way or 4-way pedal
- Arthroscopy tubing and accessories specific to the pump
- Quick start-up
- French quality manufacturing

PEDAL CONNECTIONS

The red pedal « Flush » allows to increase the initial pressure between 40-50% for 2 minutes in case of bleeding.

The blue «Cannula suction» pedal is used to empty and clean the joint.
It allows to increase the flow without increasing the pressure.

The black pedals are used to control the handpiece connected to the Shaver console.





Day Set
AV4503



Patient Set or
Intermediary Set
AV1102



Patient Set
AV4509

3 KIND OF TUBULURES

Day set AV4503

In-flow

Irrigation tubing reusable during the day.

Allows the irrigation of the joint cavities by using the circulation of saline solution.

Patient Set : 2 tubes AV1102 / AV4509

Arthroscopy using the shaver

Inflow :

Single use intermediate tubing with non-return valve. Connected to the Day set and to the trocar sheet of the arthroscope

Outflow :

Tubing allowing the aspiration and evacuation of waste.

Intermediary Set AV1102

Arthroscopy without the shaver
(simple exploration)

Flux entrant

Single-use intermediate tubing with non-return valve connected to the Day Set

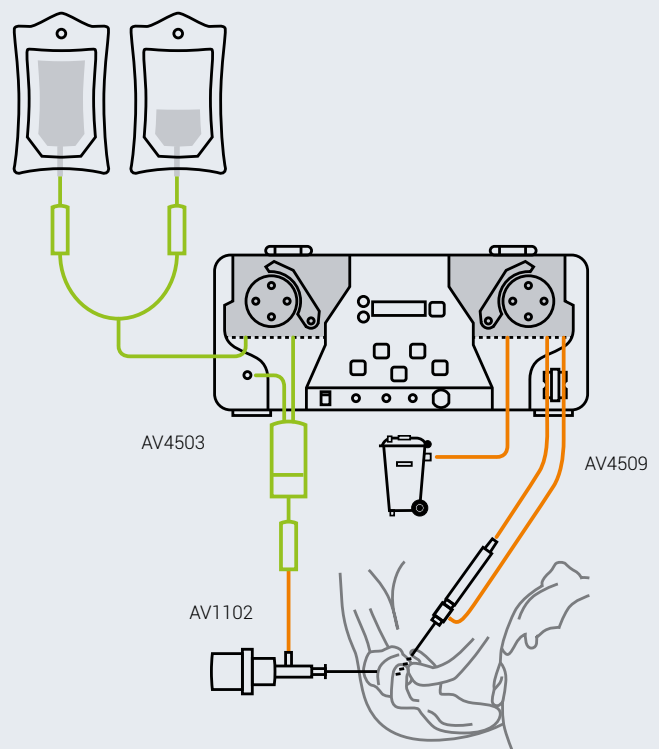
CONNECTIONS OF CONSUMABLES

- Quality arthroscopy tubing
- Sterile products
- Allows two types of flow:
 - Inflow
 - Outflow

Green tubing (AV4503) = Day set

Orange tubing (AV1102) connected to the Day set = Intermediate single use tubing with non-return valve included in the Patient Set or Intermediary set

Other orange tubing (AV4509) = second part of the Patient Set for aspiration





STORAGE

Aqua Vision pump single-use tubing should be stored in its intact original packaging in a clean, dry environment at room temperature.

HANDLING

It is recommended that the pump and accessories be cleaned daily with a disinfectant wipe. For further information, please read the instructions for use.

DESIGNATION	REFERENCE
EQUIPMENT	
Arthroscopy pump	10001433
2-way pedal	10001436
4-way pedal	10001434
Pedal interface for EBERLE shaver console of the VIMS range	ARTH-FCI04
Pedal interface for shaver : S&N, Arthrex, Conmed and Storz	Contact us
CONSUMABLES	
Day Set	AV4503
Patient Set	AV4509
Intermediary Set	AV1102

CE 0459 CLASSE IIa | CE CLASSE I NON STERILE

Document design date : January 2022 - Manufacturer : HEMODIA, Brand name : Arthroscopy pump and sterile single-use tubing - Medical Device Class : IIa - CE Mark N° : 0459 - Brand name : Pedals and interfaces - Medical Device Class : I non sterile - User : Health Professional - Recommendations for use : it is highly recommended to read the labels and the IFU BR_POMPE_EN_V3

Copyright © 2021 VIMS SA.



10 AVENUE DE FONTRÉAL - EUROCENTRE
31620 VILLENEUVE LES BOULOC - FRANCE
TÉL. +33 5 34 45 09 09 - FAX. +33 5 61 22 85 84
VIMS-SYSTEM.COM